

Specialists in endoscope reprocessing  
for more than 25 years!

## WASSENBURG® PROCESS MANAGER

traceability and process monitoring

+ **Endoscope reprocessing in detail**

Digital traceability and monitoring of the washing & disinfection and drying & conditioning processes in the WASSENBURG® systems.

+ **Simple and smart**

Easy-to-use network application for small clinics and hospitals with multiple locations.

+ **Professional management**

Endoscope equipment and operator statistics for analysis, auditing and calculation purposes.

+ **Fast and accurate**

Continuous access to reliable traceability data. With the optional universal connection module, pre-set endoscope-related information from Process Manager can be transferred to third party applications (capable of receiving this data). Please contact your local Wassenburg supplier for further information.



## OPTIMUM CONTROL

- + Safe digital traceability
- + Webbased server application
- + Management information
- + Real-time process monitoring
- + Accurate tracking and tracing
- + Advanced filter search
- + General alarm messages e-mailed
- + Easy and quick look back possibilities
- + User & endoscope management
- + Optional upload module to third party applications

## GENERAL SERVER SYSTEM REQUIREMENTS

Operating system: Windows server 2003, 2008 or 2008 R2 (32 or 64 bits)

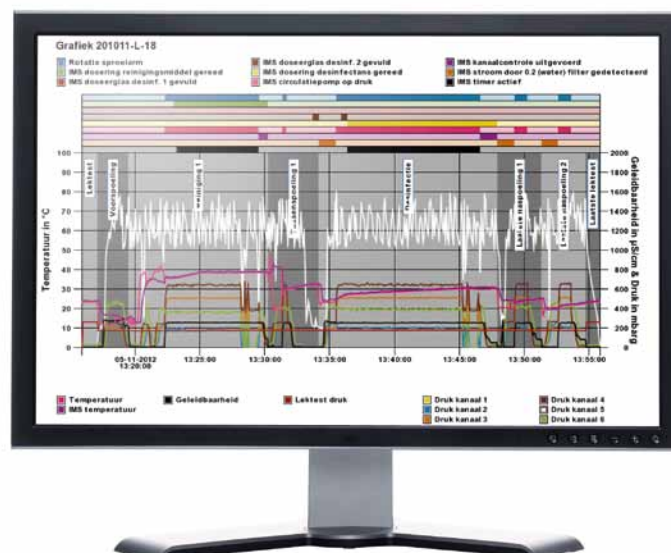
Web browser: Microsoft Internet Explorer 7, 8, 9

## Firefox 3 to 11

## Safari 4, 5

## Google Chrome 4 to 18

## SYSTEM REQUIREMENTS



The WASSENBURG® Process Manager can be installed on a server, supplied by the hospital. The minimum server system requirements and the minimum requirements for the work stations can be requested through your Wassenburg supplier.

© Copyright 2012. Subject to alterations.